

Report to Scrutiny Commission

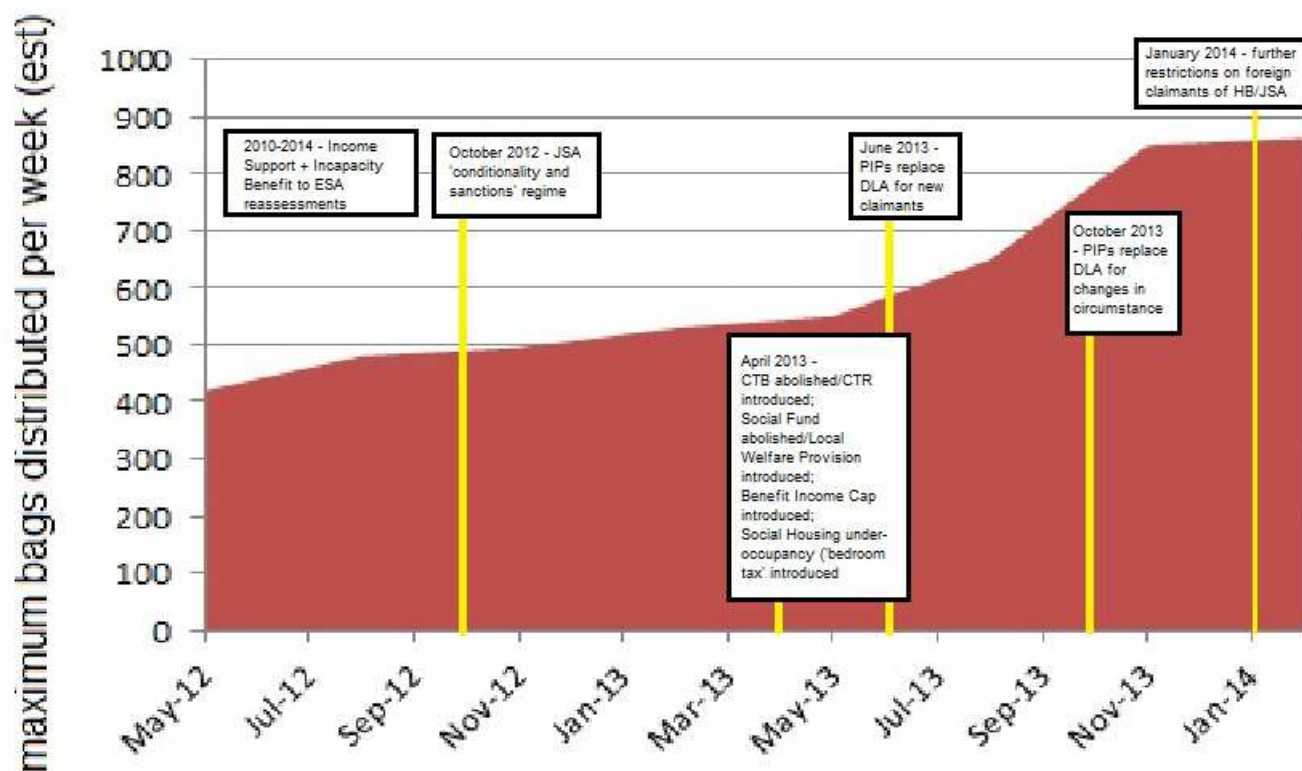
Neighbourhood and Community scrutiny
committee

Appendix A

**Key Statistics and Analysis
Food Banks Consultation 2014**

FIG. 1

**Estimated food bank provision in Leicester May 2012 to date
(compared with DWP Welfare Reform Program)**



Timetable of Welfare Reform 2010-date

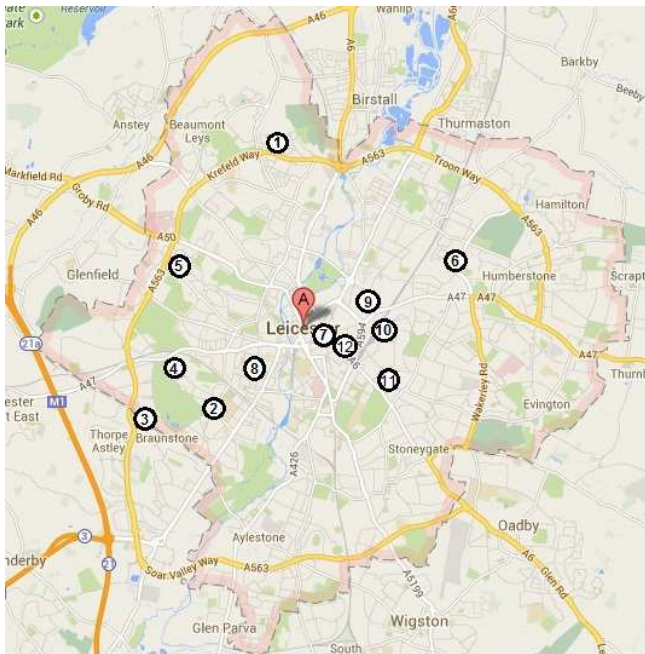
Welfare Reform Time table		
Date	Change	Notes
27 October 2008	Incapacity benefit abolished	Incapacity benefit was abolished and replaced with ESA
January 2012	Changes to Housing Benefit for <35	People under 35 are paid a housing benefit rate synonymous with renting a room in a shared house except in certain circumstances
1 April 2012	Employment and Support Allowance	Entitlement to ESA is reduced to one year only for people in the Work Related Activity Group (WRAG)
30 April 2012	Youth ESA	Entitlement for young people to claim ESA in the absence of any NI contributions has been abolished
7 January 2013	Child benefit payments cease or reduce	Payments of child benefit cease for people with earnings of £50,000 or £45,000
21 January 2013		New work capability assessment introduced
1 April 2013	Local Housing Allowance linked to CPI	Rates used to calculate HB will be based on the consumer price index which rises at a slower level than local rents.
1 April 2013	Under-occupation penalty ('bedroom tax')	Housing Benefit 'bedroom tax' for social housing tenants is introduced. Housing Benefit will be reduced for working age people who have an extra bedroom

Welfare Reform Time table		
Date	Change	Notes
		under the new rules.
1 April 2013	Council Tax Benefit	Council Tax Benefit is replaced by localised Council Tax Reduction schemes. Each council will run their own scheme. In England, pensioners will be protected, but most other people who used to get full help are likely to have to pay something towards their council tax bill.
1 April 2013	The Social Fund	Parts of the Social Fund will be abolished, including Community Care grants and Crisis Loans. In England, local authorities will be given money to spend on local schemes which could include things like food banks and schemes providing subsidised furniture and white goods.
8 April 2013	Personal Independence Payment	Personal Independence Payment (PIP) is introduced in Cheshire, Cumbria, Merseyside, North East England and North West England. PIP is a new benefit for people who are very ill or disabled and who have trouble getting around or need help with day-to-day living. It will eventually replace Disability Living Allowance
15 April 2013	Benefit Income Cap	The Benefit Cap starts in four local authority areas - Bromley, Croydon, Enfield and Haringey. The Benefit Cap means some people of working age will have a limit on the amount of benefit they can get. At first, this will only affect you if you're getting Housing Benefit. Later, it could also affect you if you're getting Universal Credit.
29 April 2013	Universal Credit	Universal Credit starts in one pilot area - Tameside, in the North of England. Universal Credit is a new single benefit which will replace most means-tested benefits paid to working age people in and out of work. For new claims, couples where one partner is of working age and the other has reached Pension Credit qualifying age will have to claim Universal Credit rather than Pension Credit.
10 June 2013	Personal Independence Payment replaces DLA	No more new claims for DLA will be accepted. You'll have to apply for PIP Instead.
16 July 2013	Access to Work program for disabled people is extended to include new groups	Scheme is amended to include young people and cover apprenticeships and 'academy like training courses.

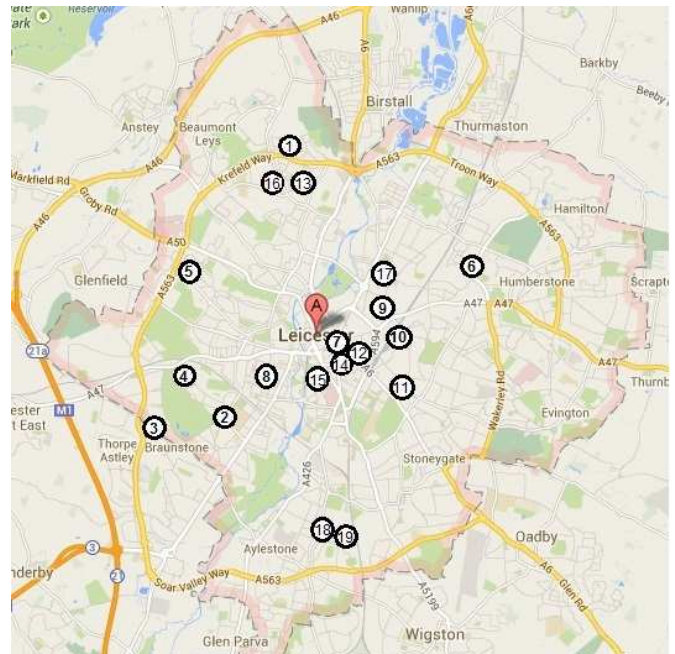
Welfare Reform Time table		
Date	Change	Notes
		Help is also available for new business start-ups as well.
July 2013 onwards	Universal Credit	Universal Credit starts in three other pilot areas - Wigan, Warrington and Oldham.
15 July 2013	Benefit Income Cap	Benefit Cap national roll-out begins.
September late onwards	Benefit Income Cap	Benefit Cap roll-out completed in all areas.
October 2013	Personal Independence Payments	Reassessment of existing DLA claims for PIP begins for those that report a change in condition or reach the end of an existing award in Wales, East Midlands, West Midlands and parts of East Anglia
January 2014	New EEA rules	JSA entitlement rules changes for JSA claimants from the EEA imposing more rigorous criteria. EEA nationals cannot claim JSA until they had been resident for at least three months.
April 2014	New EEA no HB	EEA nationals who are not already in receipt of Housing Benefit will be ineligible to make any new claim for assistance with rent payments.
April 2014	Help to Work	Claimants returning from the Work Programme will go onto one of three intensive modes of support, determined by JCP advisor
April 2014	Local Housing Allowance	Uprating limited to 1%
October 2015	Personal independence payments	Reassessment of remaining DLA caseload for PIP begins
April 2016	Retirement pension	New single tier pension to be implemented
2017	Universal credit	Every eligible person to be claiming UC

FIG. 2

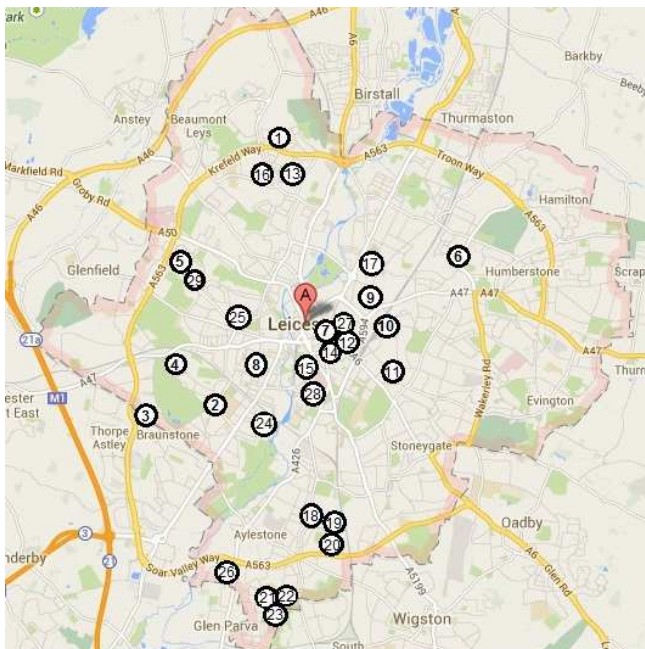
Provision of food banks across the Leicester City area 2012 – date



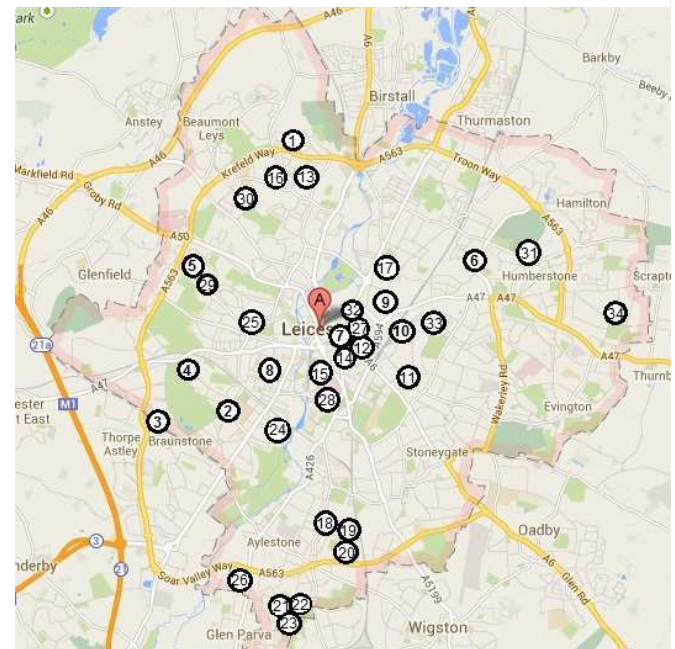
June 2012



December 2012



June 2013



December 2013

FIG. 3

Breakdown of current food bank resources

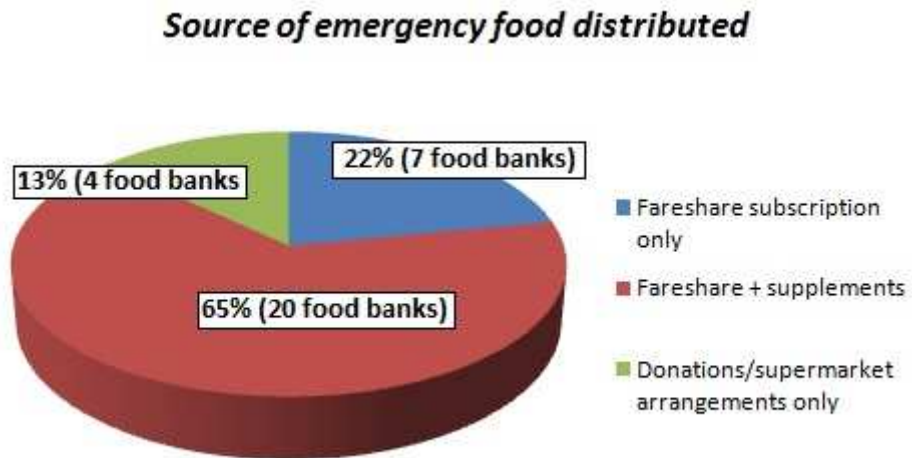
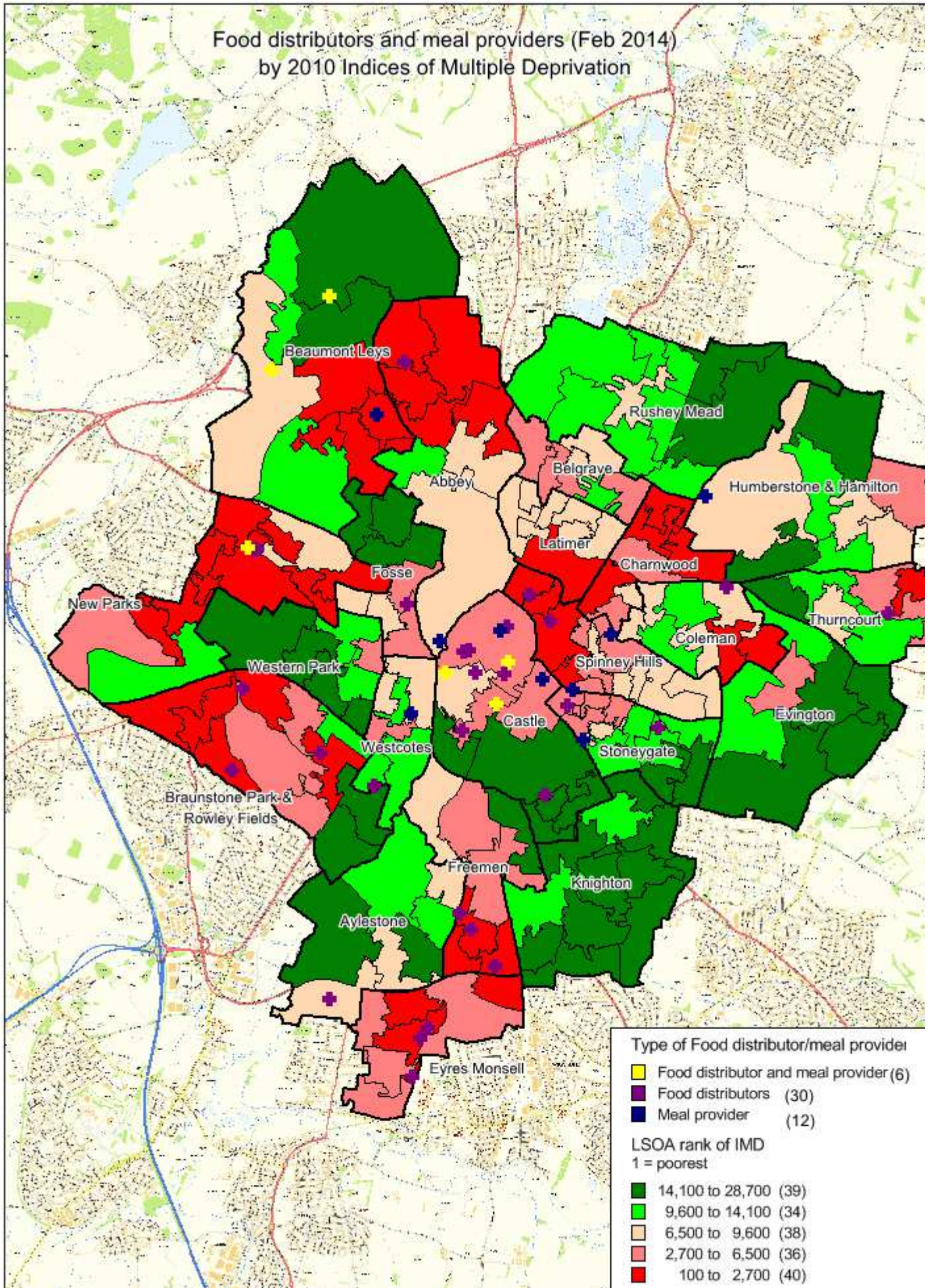


FIG. 4



Food distributors and meal providers (Feb 2014)
by 2010 Indices of Multiple Deprivation

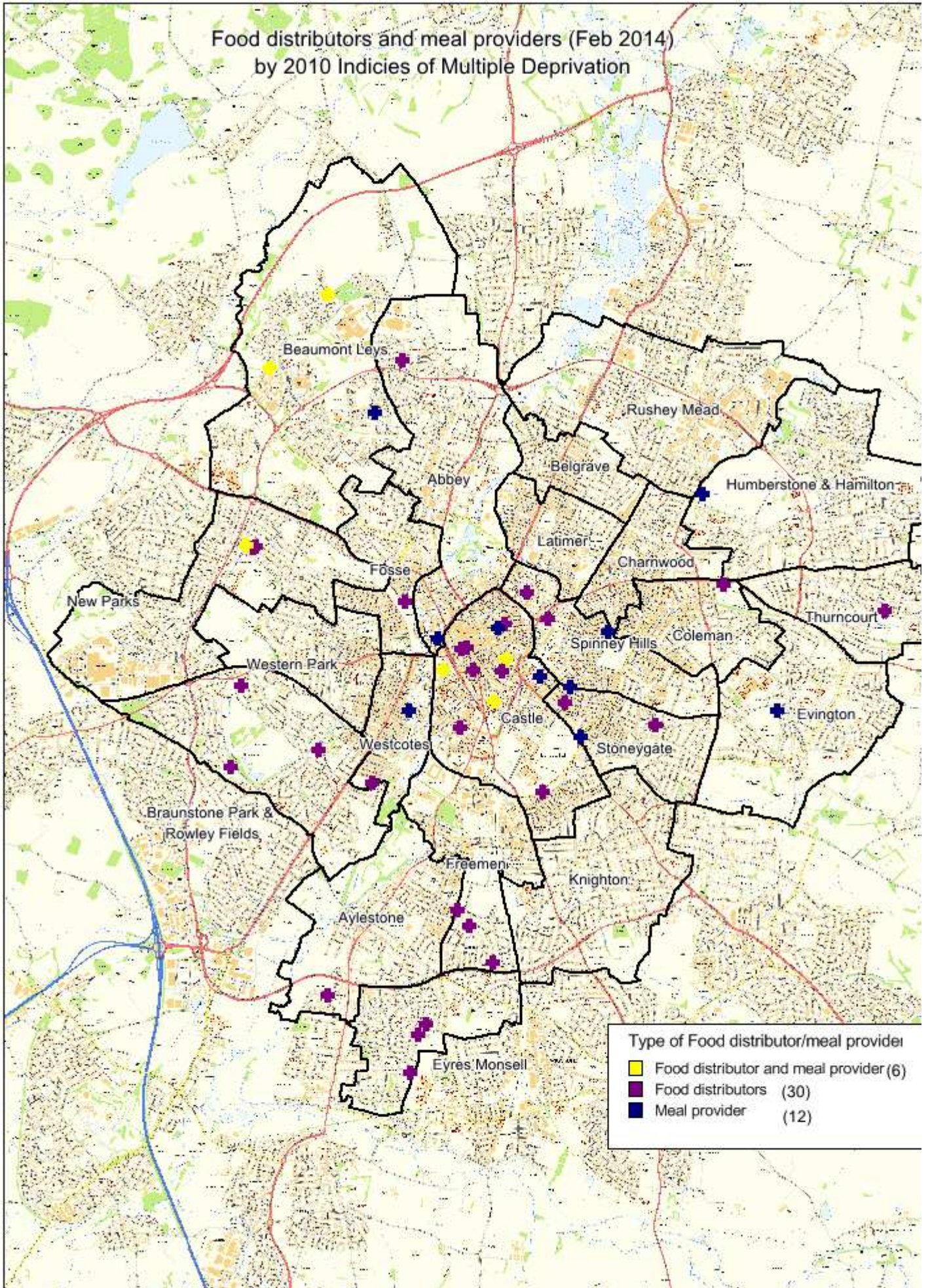


FIG. 6

Demand analysis of referral requests received by LCC-sponsored food bank agencies February 2012 – date.

	New Parks STAR	Beaumont Leys STAR	CSG Team
Feb - Apr 12	3	0	0
May - Jul 12	8	0	0
Aug - Oct 12	16	49	0
Nov - Jan 13	38	51	0
Feb - Apr 13	42	108	0
May - Jul 13	49	121	0
Aug - Oct 13	67	110	126
Nov - Jan 14	77	*260	401

**Beaumont Leys final figures projected, available until Nov'13 only*

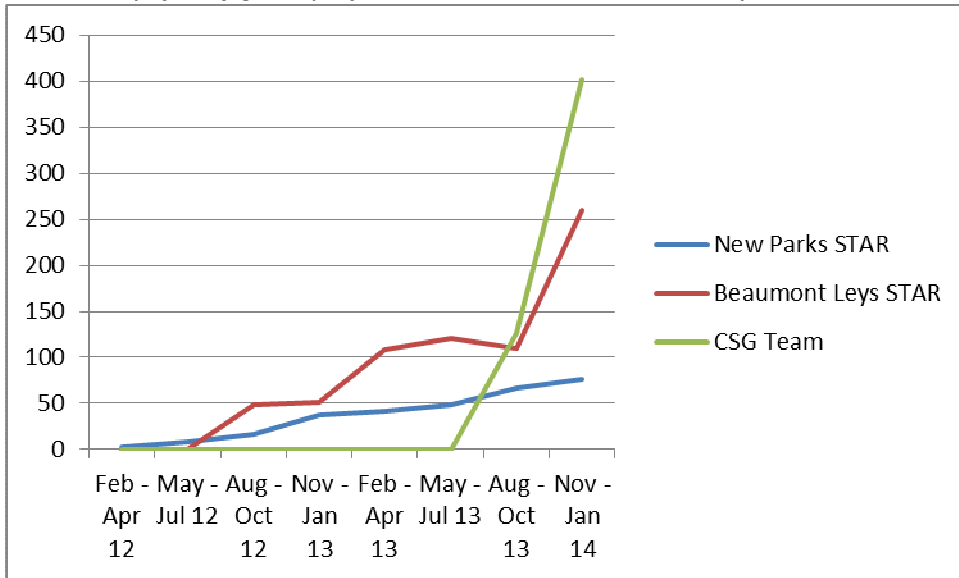


FIG. 7

Analysis of referral requests received by the CSG Team August 2013 to date.

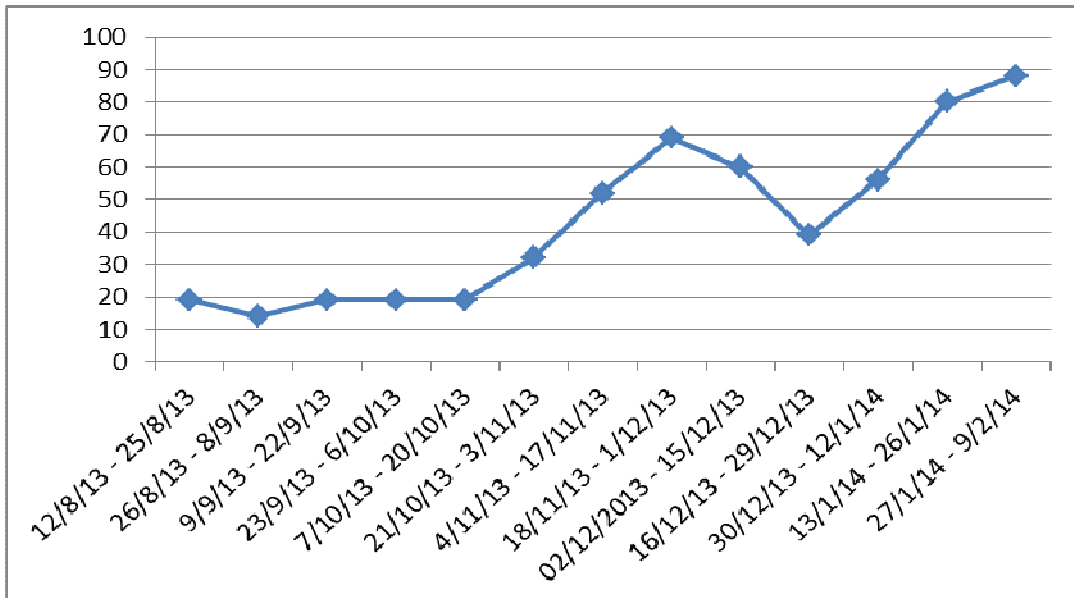


FIG. 8

Analysis of demand compared with current levels of supply.

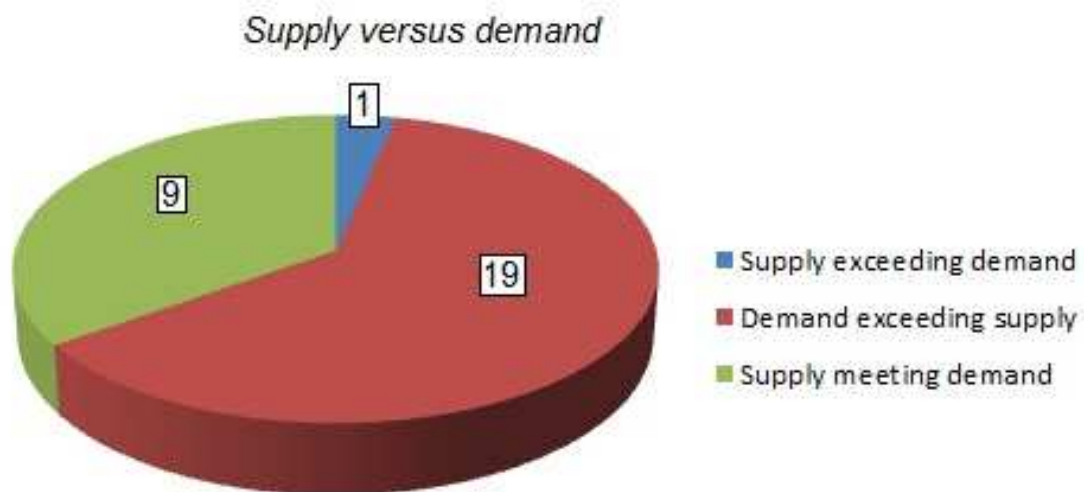


FIG. 9

Analysis of the models of access criteria adopted by each food bank.

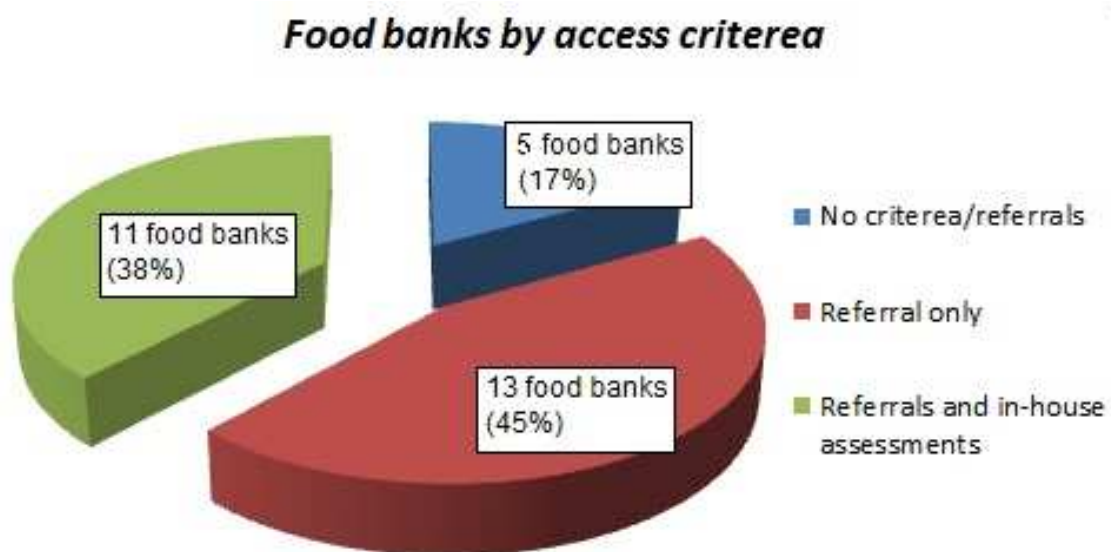


FIG. 10

Average food distribution compared with access model adopted.

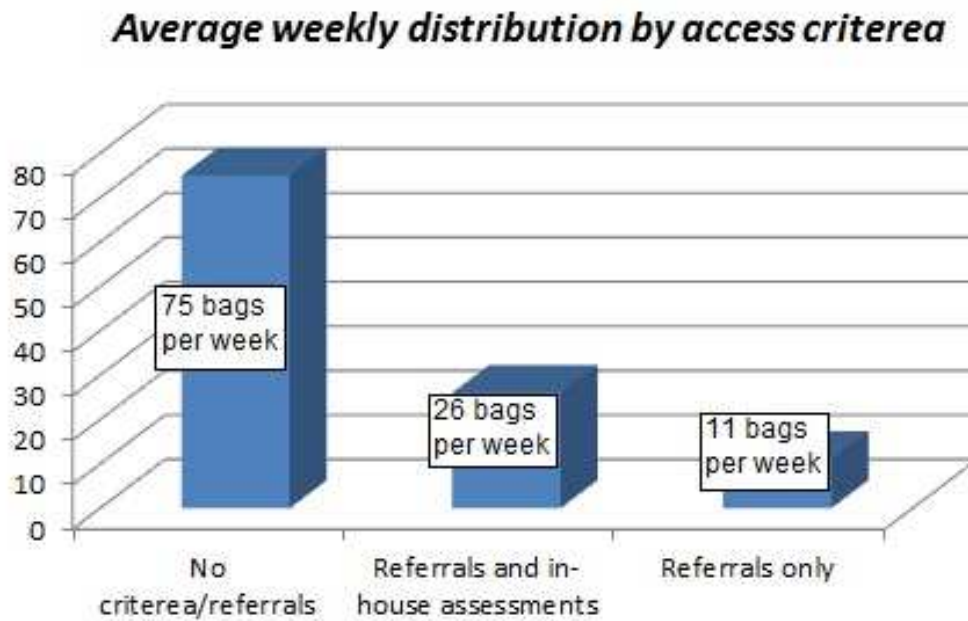
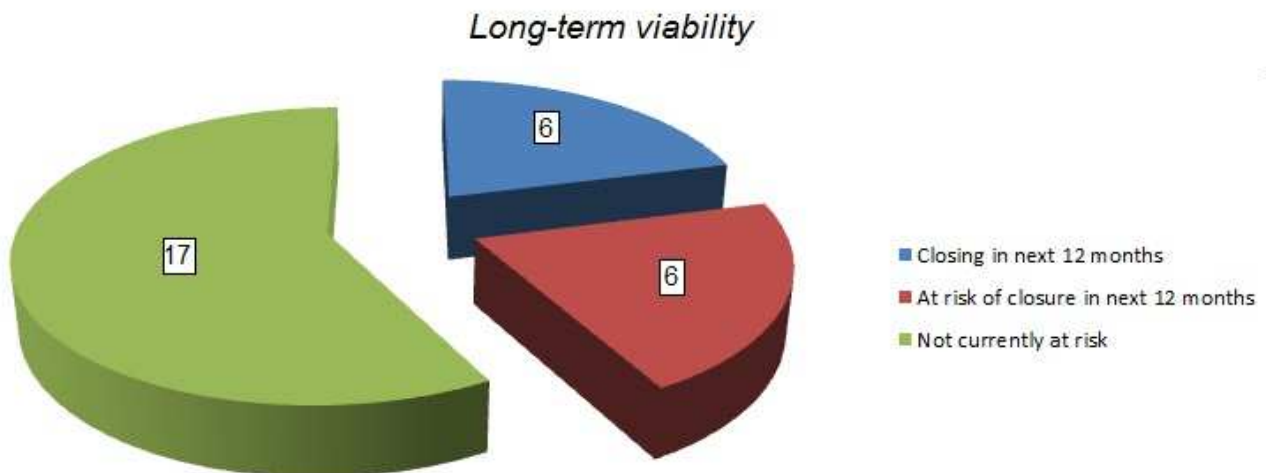


FIG. 11

The viability of current food banks to continue operations in the next 12 months.



From a high point of 34 food distributors at the end of 2013, 2 have now ceased operations due to funding withdrawal and one due to the collapse of a distribution agreement with a local supermarket;

Of 29 food banks polled, 6 were in danger of ending their current operations within the next 12 months. A further 6 centres operating under the Linwood Centre were due to cease in March 2013 due to the redundancy of the coordinator unless another organisation came forward to assume responsibility;

Only four food banks currently operating are not dependent on Fareshare provision, of which two had made enquiries to ask for their assistance. Above queries regarding viability were conducted prior to Fareshare's announcement that provision to food banks would cease in April 2014.